



Tel. No. +91(484) 2361181/2351181/2366340  
Fax No. +91(484) 2370897/373902  
E- Mail: cochinshipyard@vsnl.com  
civil@cochinshipyard.com  
Web: www.cochinshipyard.com

## COCHIN SHIPYARD LIMITED

(A Government of India Enterprise)  
P.O. BAG NO.1653 COCHIN-682 015 INDIA

No. CIV/102/2011/AGM (CE)

19.01.2012

### **TENDER NOTICE**

Sealed competitive tenders in the prescribed form are invited on behalf of Cochin Shipyard Limited from experienced contractors for the under mentioned work so as to reach the undersigned on or before the date and time mentioned below:

- Name of work : Gable end covering for Ship Repair Pipe Shop
- Earnest Money to be deposited : Rs.40,000/-.
- Cost of tender form : 200 + ST (4%)  
(Those who down load the tender form from website also will be required to remit the cost Along with the tender documents in the form of DD)
- Last date and time of issue of tender forms : 06.02.2012 15.30hrs
- Last date and time of receipt of tender : 07.02.2012 14.00hrs
- Date and time of opening of tender box : 07.02.2012 14.30hrs  
( Price bid of those tenders who submitted EMD and certificate signed by the contractor Will be opened on a later date.)
- Time of completion of work : 3 months
- Short description of work : The work consists of earthwork excavation, PCC, RCC, brick work, plastering, painting, fabrication of structurals and cladding with aluminium sheet etc.

Tenderers have to submit proof of remittance of EMD in a separate sealed cover, which has to be kept outside the cover containing the tender. The tenders of only those contractors who have submitted proof of remittance of EMD as above will be opened.

All the tender documents (NIT, General Conditions of Contract, Special Conditions & Tender Schedule) are available on Cochin Shipyard's website [www.cochinshipyard.com](http://www.cochinshipyard.com) and Govt. website <http://tenders.gov.in/department.asp>. Tenderers can download the forms and use the same for submission of the tenders.

Sd/-  
Assistant General Manager (Civil)

## CIVIL ENGINEERING DEPARTMENT

### SPECIAL CONDITIONS

No.CIV/102/2011/AGM (CE)

#### GABLE END COVERIING FOR SHIP REPAIR PIPE SHOP

1. The conditions enumerated below are in addition to and will have precedence over the General conditions of contract given in “Conditions of contract and instructions to Tenderers of CSL”.
2. “General Conditions of Contract and Instructions to Tenderers” is available in the CSL website. The tenderer shall submit his tender document including GCC. Although, it is permissible to submit the tender without the copy of GCC, while entering into agreement by the successful tenderer, the GCC shall be duly signed by both the parties and form part of the agreement. As such, it is deemed that the tenderer has made reference to the GCC in the website or otherwise, and has full knowledge of its contents, although it is not signed and attached with the tender.
3. In the General Conditions of Contract DGM (Civil) should be read as AGM (Civil) who will be the Engineer- in- charge.
4. All corrigenda, addenda, amendments and clarifications to Tender Specifications will be hosted in the website [www.cochinshipyard.com](http://www.cochinshipyard.com) and not in the newspaper. Bidders shall keep themselves updated with all such developments till the last date and time of submission of tender.
5. The tender for the work will be based on two cover system (cover ‘A’ & cover ‘B’)

#### **5.1.Cover A:**

Cover A shall contain EMD for Rs.40,000/- in the form of DD/TDR/Bankers cheque drawn in favour of Cochin Shipyard Limited and the following Certificates signed by the contractor.

- (i) “ I / WE COMPLY WITH ALL CONDITIONS OF TENDER BY CSL AND CONFIRM THAT RATES QUOTED IN THE PRICE BID ARE INCLUSIVE OF ALL TAXES AND DUTIES INCLUDING SERVICE TAX IF APPLICABLE. I / WE ALSO CONFIRM THAT COVER B (PRICE BID) DO NOT CONTAIN ANY CONDITIONS”**
- (ii) “I/WE HAVE NOT MADE ANY PAYMENT OR ILLEGAL GRATIFICATION TO ANY PERSON/AUTHORITY CONNECTED**

**WITH THE BID PROCESS SO AS TO INFLUENCE THE BID  
PROCESS AND HAVE NOT COMMITTED ANY OFFENCE  
UNDER THE PC ACT IN CONNECTION WITH THE BID.”**

**Cover B:**

Financial /price bid - shall contain the rates and amount for each item of work.

There shall not be any clause, added by the tenderers in the price bid. Price bid with any clause and conditions other than rates and amount will be summarily rejected.

- 5.2. The cover A & cover B shall then put together in another cover marked Cover C, which shall be sealed and superscribed with name of work, the address & Contact No. of contractor.
- 5.3 Cover C shall be opened at 14:30 hrs on 07.02.2012 at the office of AGM (Civil). At first cover A containing EMD and certificates from the contractor shall be opened. In case the earnest money is not deposited or is not in order, the tender shall be returned to the tenderer unopened either on the spot, if the tenderer is present, or later by post. Only a mention to this effect shall be made in the tender opening register.
- 5.4. Price bid (cover B) of those tenders who have qualified technically and submitted EMD and the undertaking that Cover B do not contain any conditions shall only be opened on a later date after giving notice either by post/ e-mail/ telephonic information to the bidders. Tenderer should ensure that his quoted amount as per cover B is not mentioned anywhere in other documents, directly or indirectly. If any such mention is made the tender will become invalid and shall become liable for rejection.
6. The acceptance of a tender will rest with AGM (Civil) and reserves the authority to reject any or all of the tenders received without assigning any reason.
7. Cochin Shipyard Ltd. shall without prejudice to any right or remedy is at liberty to forfeit the said EMD absolutely if the tenderer withdraws his tender before the validity period or makes any modifications in the terms and conditions of the tender which are not acceptable to CSL.
8. The tenderer should keep open the validity of the tender normally for 90days from the date fixed for its opening. Should any tenderer withdraw his tender before these periods, or make any modifications in the terms and conditions of the tender, which are not acceptable to CSL, the earnest money deposited by the tenderers shall be forfeited.

9. Unless and until formal agreement is prepared and executed, this tender together with your written acceptance there of shall constitute a binding contract between the bidder and CSL.
10. If any difference is found in different parts of the tender documents, the following will be the order of precedence:-
  - (i) Schedule
  - (ii) Specification and drawings
  - (iii) Special conditions
  - (iv) Condition of contract and instructions to tenderers.
- 11. Rates shall be quoted both in figures and words. Rates quoted should be inclusive of all taxes and duties, including service tax if any, in accordance with the tender schedule. The awarded tenderer has to furnish Service Tax registration certificate on demand.**
12. The tenderers are expected to have inspected the site, before quoting, read the conditions thoroughly and understand the works in all respect. Clarifications, if any may be obtained from the Assistant General Manager (CE) before the tender is submitted, and if clarifications/details are not obtained before the tender is submitted, no claim on this account will be admitted. The submission of a tender by tenderer implies that he has read this notice and General Conditions of Contract and has made himself aware of the scope and specifications and other factors bearing on the tender.
13. 10% of the bill amount (less EMD) will be deducted from running bills as security deposit and the same shall be released after the successful completion of the observation period of **Six months**. The contractor has to make good at his own cost all defects observed during the observation period.
14. The time of completion of work of 3 months and shall be reckoned from the 14<sup>th</sup> day of the date of issue of the work order or the date of handing over the site whichever is later.
15. Late tenders and price bids with conditions will be summarily rejected.
16. The contractor shall submit a detailed time schedule of work in conformity with the completion time stipulated in the tender within 14 days from the date of issue of letter awarding the work.
17. The contractor or his authorised technically qualified representative shall be available at CSL throughout the period of contract for receiving instructions from department, arranging and executing the work. The Contractor / representative shall report at the

office of the Engineer - in- charge on all working days before 8:30 hrs and receive instruction regarding the works.

18. The normal working time of the CSL is from 8.15 A.M. to 5.00 P.M on all weekdays and Saturdays with half an hour interval from 12.15 noon to 12.45 P.M. All Sundays, second Saturday and fourth Saturday are holidays in addition to CSL declared holidays. The site will be available for work during office hours only. However if the Contractor wishes to carry out the work beyond normal working hours or on holidays, he should get specific approval from the Engineer-in-Charge for the same in order to have effective supervision from Department.
19. The space for fabrication will be given by CSL at suitable location as per availability without affecting CSL activities. No extra claim will be entertained.
20. The work shall be open at all times for inspection to the Engineer-in-charge, his authorised representative or any other third party deputed by the Engineer-in-charge.
21. Engineer-in-charge will be at full liberty to impose penalties for the violation of any of the agreement clauses.
22. AGM (CE), Cochin Shipyard Ltd. or his duly authorised representative will open tenders in the presence of any indenting contractor's or their authorised representatives who may be present at the time.
23. The drawings enclosed with the tender documents are to be returned along with the tender duly signed and the same will form part of agreement.
24. The drawings enclosed with the tender documents are meant for the general guidance of the bidders. They are liable to change subject to any additions or deletions required later. The Engineer-in-charge, Cochin Shipyard Limited reserves the right to make necessary changes whenever required. Payment will be made as per the actual work executed and no additional claim on rates what so ever on this account will be entertained.
25. The quantities given in the Schedule of quantities are only approximate and payment will be made as per actual quantity of work done on rate quoted.
26. The time allowed for the work is inclusive of rainy season prevailing in Kerala. The contractor shall take note of the situation while quoting. No extra rate will be admissible and it shall be the contractor's responsibility to keep the construction site free from water at his own cost. Normally no extension of time will be admissible for work in monsoon seasons.

27. Any discrepancy found in the drawings and any variation of quantity available in the schedule with the drawings shall be brought to the notice of the Engineer-in-charge before commencement of work.
28. If the contractor fails to arrange the work in time, CSL will arrange the work at the risk and cost of the contractor.
29. Contractor shall be permitted to use artificial crushed sand (fine aggregate) in place of “clean river sand” subject to approval of Engineer-in-charge. For plastering work clean river sand should be used.
30. Stage wise approval from the Engineer in charge is required for all works.
31. The contractor is expected to acquaint himself with the site conditions, labour situation, wage and benefits applicable to labourers, working hours, out turn of work by labour and the fluctuations which are likely to happen till the work is completed on all the above aspects prior to quoting the rates. Any extra claim on this account will not be entertained.
32. The work shall be carried out without damaging any of the existing structures/ structures under construction in the locality. Any damages caused due to lack in safety or improper shoring during excavation, the same shall be got rectified at the risk and cost of the contractor. All precautionary measures as suggested by the Engineer-in-charge are to be taken while welding near electrical installation and other service installation.
33. Any pending decision or details for the works will be given at the appropriate time without affecting the work and the same shall be asked by the contractor as and when required. As a routine this will not be treated as a hindrance.
34. Kerala Public Works Department specifications are to be followed for the work. If specifications are silent about any aspect, IS codes as directed by the Engineer-in-charge shall be followed. In the absence of both the above, sound engineering practice shall prevail. Decision of the Engineer-in-charge in this respect will be final.
35. All materials used for the construction shall be of approved brand as directed by Engineer-in-charge. Any clarifications in this regard may be obtained from the office of the Engineer-in-charge before tendering. Contractor shall also submit the original purchase bills and test certificates as required by the Engineer-in-charge. Unless otherwise decided by the Engineer-in-charge all materials are to be procured by the contractor.

36. Necessary “Work in progress” boards shall be provided by the contractor at locations shown by the Engineer-in-charge.
37. For the construction purpose, the entire site will be handed over. Any delay in handing over of any part site by Cochin Shipyard Ltd., the contractor will be eligible for proportionate extension of time including time for mobilisation as decided by Engineer-in-charge. No extra claim will be entertained on this account.
38. All structural steel brought by the contractor will be permitted for priming coat and fabrication only after cleaning with power brushing.
39. Contractor shall work in close co-ordination with other agencies working in the same work site at the same time. The space for storage of materials will be decided by the Engineer-in-charge without affecting CSL activities. The contractor shall acquaint himself with the site conditions and location for material storage prior to tender.
40. Quality of cement used for the work shall be 43 grade ordinary Portland cement conforming to I.S.8112 or 53-grade ordinary Portland cement conforming to I.S. 12269 or Pozzolona cement conforming to I.S. 1489 unless otherwise approved by the Engineer-in-charge.
41. The reinforcement steel used for the work will have to be procured by the contractor and shall be Corrosion Resistant Steel (CRS)/ordinary quality HYSD bars of Fe500/Fe 415 grade conforming to I.S. 1787 unless otherwise approved by the Engineer-in-charge.
42. Electric power supply from KSEB grid is available in CSL but cannot ensure uninterrupted power supply. There can be restriction in supply of power by KSEB. Contractors shall take note of this situation.
43. Following services/materials will be given free of cost depending upon availability. Contractor has to make his own arrangements to avail the same at his risk and subject to satisfying statutory rules and regulations if any.
  - a) Water
  - b) Electricity
44. Any cement that the Engineer-in-charge considers become stale or unsuitable through absorption of moisture from the atmosphere or otherwise due to improper transport/ storage/ handling by the contractors shall be rejected.
45. Empty cement bags are to be stacked in bundles and to be cleared from site at contractor’s expense as directed by the Engineer-in-charge.

46. Waste materials like excavated earth and spilled over concrete etc. are to be cleared from site on a day-to-day basis. **Each area of working is to be cordoned off with necessary signboards and barriers to ensure safe transportation of men and material by CSL in the area as directed by the Engineer-in-charge.**
47. AGM (CE) shall have the right to take possession of or use completed or partially completed part of the work during the currency of contract. Such possession or use shall not be deemed to be an acceptance of such work. After completion of all the works, the contractor has to clear the debris at the site and the final bill shall be paid only after the site is cleared off all the materials.
48. The contractor shall not construct any structure, even of temporary nature, for any purpose at site, except with the written permission of the Engineer-in-Charge of the work and any construction so put up shall be removed by the contractor whenever the Engineer-in- Charge calls upon the contractor to do so. Contractor is liable to pay necessary license fee to the land allotted for site office. Ground rental charges will be levied from the contractor for the land allotted by CSL to him for setting up temporary office space at the rate of Rs.5/- per m<sup>2</sup>/month. However, no rental charges will be levied for the material storage area allotted.
49. In the event of Force Majeure situation, which are beyond the control of contractor/CSL, which affect the execution of the work or the contractor's obligations in whole or part, the contractor is entitled to claim proportionate extension of contract period. Force Majeure includes
- (a) Situations like war, Act of foreign enemies, rebellion, terrorism, riot, strike or lockout. Natural catastrophes such as earth quake, hurricane or volcanic activity, torrential rains, floods etc.
  - (b) Storm, to the extent that it could not reasonably have been expected to occur at the place, at the time of year.
  - (c) Epidemic, famine;
  - (d) Strike, Hartal or boycott interrupting supply of materials, labour and services to the site (excluding Strike by employees of contractor for any reason whatsoever).
  - (e) Any other event or circumstances of nature analogues to any of the above or an act of God.

- (f) Munitions of war, explosive materials, ionizing radiation or contamination by radioactivity, except as may be attributable to the contractor's use of such munitions, explosives, radiation or radio-activity, and Natural catastrophes.
- (g) Fire caused otherwise than by any act or omission on the part of the contractor or its agents servants or employees or its subcontractor.
50. For works at height and excavation / trench openings, hot works and night work, Work permit from safety department has to be obtained before commencement of work. It is the responsibility of the contractor to follow all safety, security and labour rules enforced in CSL during the currency of contract and any violation of the same during the course of work will be at the risk and cost of the contractor and will attract penal action.
51. If scaffolding is required for the works above ground level, the rate for those items should include charges for providing, hoisting, fixing and removing the scaffolding to the required height. Nothing extra will be paid on this account.
52. For all items brought from outside to be used/ consumed on the work, Material Declaration forms with work order number shall be obtained from CISF Security section and the same shall be submitted at the office of the Engineer-in-Charge.
53. The structural steel for the work shall be manufactured by M/s. SAIL, or M/s VIZAG or M/s.TATA, or M/s JINDAL. Purchase of material other than above due to non-availability of the materials in Kerala shall be only with the approval of the Engineer in charge.
54. All Safety measures prescribed in the CSL safety manual shall be strictly adhered during execution of work. Copy of the same is available in the Office of AGM (CE) and the same may be referred before quoting the rates.
55. Any violation of Safety rules by the contractor, safety department will impose penalty of Rs 1000/- to Rs 5000/- depending on the gravity of violation. Action for debarring the contractor also will be taken as decided by the safety department of CSL in case of repeated violation. Any accident caused due to safety violation and any damage to the company property suitable penalty will be imposed by CSL including termination of contract if required.
56. Welding Sets without ELCB and Safety Relay will not be permitted at site. Also flashback arrester is to be provided in all cutting torches. Necessary instructions

regarding safety from Safety Department shall be strictly adhered to by the agency. No work with cutting torch will be permitted during erection.

57. 75% advance from the bill after deducting necessary recoveries will be released if requested by the contractor. Balance amount will be paid only after scrutiny and check of the bill.
58. Any material advance given to the contractor by CSL will be recovered immediately on consumption either in part or full as the case may be.
59. All Bank Guarantees shall be unconditional as per the approved format for the particular case with up to date amendments made by Cochin Shipyard Ltd.
60. Extension of Time will not be allowed for reasons which are attributable to the Contractor. A Hindrance register will be maintained by CSL. Any hindrance in the work which leads to delay in completing the work has to be recorded in the register and duly signed by the contractor and Engineer-in-charge. Likewise the removal and resume of work also to be recorded and duly signed by both the parties.
61. The tenderer shall furnish the PAN No: and Service Tax registration certificate. The income tax / KVAT / any other statutory taxes, as per the rules / directions of the concerned departments, prevailing in force at the time of payment of bills will be deducted while making payment or when crediting the amount to the account.
62. The Contractors registered under the Kerala Value Added Tax Act, 2003 shall produce a Liability Certificate, along with the bill, in relation to the works contract, from the Assessing Authority showing the tax liability or tax remittance as the case may be and the works contract tax deduction will be made accordingly. Otherwise works Contract Tax @ 8.08% in the case of the registered contractors and 10.1% in the case of unregistered contractors will be deducted from the payment released against the contract.
63. It will be mandatory for the bidders to indicate their bank account numbers and other relevant E-payment details so that payment could be made through NEFT/RTGS mechanism instead of payment through cheques, wherever feasible. Required format will be supplied later by the department.
64. **Occupational Health, Safety & Environmental requirements**
  - 64.1. The contractor is deemed to comply with the Occupational health, safety and environmental policy of the company and also to all operational controls/standard operating procedures and shall undertake the work in

total compliance with the requirements of the established Integrated Management System (IMS) of the company.

- 64.2. If any contractor failed to comply with or violated any clauses/requirements of occupational health, safety and environmental Rules effective in the state, in their activities or at work sites and the same shall be exposed to the government or any competent authorities upon inspections, the contractor shall be solely responsible for all liabilities caused by his/her action and shall be responsible for paying the penalty and taking stipulated corrective actions insisted by the authorities within the specified time, at their own cost. Any liability to the company in this regard needs to be compensated by the contractor.
- 64.3. Upon completion of the work, contractor shall clear the area and shall not leave any Occupational health/safety/environmental liabilities to the company, from their activities at the worksites.
65. The final bill shall be submitted by the Contractor within 1 month of physical completion of work. No further claim shall be made by the contractor after submission of the final bill. Final Bill will be settled within 6months from the date of submission of contractor's bill.
66. Cochin Shipyard Limited reserves the right to terminate the Contract at short notice in case the agency's performance is found not satisfactory with regard to progress of work, quality, time factor, labour dispute with their workers, poor safety records and other violation of any contract conditions. No claim whatsoever will be entertained by Cochin Shipyard Limited on this account.
67. The contractor is required to comply with the provisions of the rule in force (amended from time to time) regarding entry/exit of contractor's workmen, vehicles and materials. Necessary police clearance certificate and other photo identity cards approved by CSL should be produced for this purpose.
68. For inspecting the work site, purchasing tender documents and for depositing tender/witnessing tender opening, the contractor/ his authorized representative shall produce photo identity proof for entering CSL premises.
69. All certificates furnished by the bidders during tender shall be duly attested.
70. In the event of the tenderer, after the issue of work order by CSL, failing / refusing to execute the agreement, the tenderer shall be deemed to have abandoned to the contract

and such an act shall amount to and be construed as the contractors calculated and the willful breach of the contract, the cost and consequence of which shall be to the sole account of the tenderer and upon such an event CSL shall have full right to claim damages therefore either together with or in addition to the forfeiture of Earnest Money Deposit.

71. Secured advance shall be given for non-perishable materials as provided in Clause 15 of Conditions of Contract of GCC. For materials brought without valid Material Declaration Forms issued from CISF Security section of CSL, Secured advance shall be paid against a Bank Guarantee for an equivalent amount. Decision of the Engineer in Charge to this respect will be final.
72. CSL shall not be liable for, or in respect of, any damages or compensation payable as per law in respect or in consequence of any accident or injury to any workmen or other person in the employment of the contractor or any sub-contractor. The contractor shall indemnify and keep CSL indemnified against all such damages and compensation and against all claims, demands, proceedings, costs, charges and expenses whatsoever in respect thereof or in relation thereto.
73. The contractor shall insure against such liability and shall continue such insurance during the whole of the time that any persons are employed by him on the works. Provided that in respect of any persons employed by any sub-contractor, the contractors obligations to insure as aforesaid under this sub-clause shall be satisfied if the sub-contractor shall have insure against the liability in respect of such persons in such manner that CSL is indemnified under the policy, but the contractor shall require such sub-contractor to produce before CSL, such policy of insurance and the receipt for the payment of current premium.
74. The contract involves an obligation of secrecy and the contractor, his agents, servants or sub-contractor or their agents or servants shall observe and comply with the requirements of the Indian Official Secrets Act 1923, and the rules there under or any statutory modifications or re-enactments thereof. Any breach of this clause shall constitute a breach of the contract. The contractor shall not disclose to anybody the details of drawings prepared for the work without the approval of CSL. No photographs of the CSL area shall be taken or permitted by the contractor to be taken by any of his employees without the approval of the competent authority and no such photographs shall be published, or otherwise circulated without the approval of CSL.

75. Tenders duly filled shall be deposited in the Tender Box kept in the office of the AGM (Civil), Cochin Shipyard Ltd. before the date and time as specified in the Tender Notice. Any clarifications regarding the tender shall be obtained from the office of AGM (CE).

Sd/-

Assistant General Manager (CE)

Date:

Signature:

Name & Address of the tenderer:

**UNDERTAKING BY CONTRACTOR**

Name of work: Gable end covering for Ship Repair pipe shop

1. "I / WE COMPLY WITH ALL CONDITIONS OF TENDER BY CSL AND CONFIRM THAT RATES QUOTED IN THE PRICE BID ARE INCLUSIVE OF ALL TAXES AND DUTIES INCLUDING SERVICE TAX IF APPLICABLE. I / WE ALSO CONFIRM THAT COVER B (PRICE BID) DO NOT CONTAIN ANY CONDITIONS "
  
2. "I / WE HAVE NOT MADE ANY PAYMENT OR ILLEGAL GRATIFICATION TO ANY PERSON/AUTHORITY CONNECTED WITH THE BID PROCESS SO AS TO INFLUENCE THE BID PROCESS AND HAVE NOT COMMITTED ANY OFFENCE UNDER THE PC ACT IN CONNECTION WITH THE BID."

**Signature :**

**Name & address  
of the contractor :**

**COCHIN SHIPYARD LIMITED**  
**KOCHI - 15**

**Name of work: GABLE END COVERING FOR SHIP REPAIR PIPE SHOP**

**No: CIV/102/2011/AGM(CE)**

**TENDER SCHEDULE**

Sl. No.	Description	Qty	Unit	Rate (Rs)	Amount (Rs)
				(Both in figures & words)	
1	Earthwork excavation in Ordinary soil including depositing on bank with initial lead upto 50m and for lift of 1000mm including shuttering, all labour, other incidentals etc. complete for the successful completion of the work. (Rate is inclusive for clearing off dumped materials such as pieces of steel scraps, roots of trees, concrete if any found in the area of excavation.)	30 m <sup>3</sup>	10m <sup>3</sup>		
2	Providing and laying plain cement concrete 1:4:8 using 40mm I.S. nominal size hard granite broken stone including cost and conveyance of all materials, labour for mixing, laying, consolidating, curing, cost of form work etc. complete, excluding cost of cement.	5 m <sup>3</sup>	m <sup>3</sup>		
3	Providing and laying P.C.C 1:2:4 using 20mm I.S nominal size hard granite broken stone including cost and conveyance of all materials, labour for mixing, laying, consolidating, curing, cost of formwork, hire charges for tools and plants, other incidentals etc. complete excluding cost of cement.	2.0 m <sup>3</sup>	m <sup>3</sup>		

4 Providing and laying R.C.C 1:2:4 using 20mm I.S nominal size hard granite broken stone including cost and conveyance of all materials, labour for mixing, laying, consolidating, curing, cost of formwork, hire charges for tools and plants, other incidentals etc. complete excluding cost and fabrication charge of reinforcement and cost of cement.		
( i ) For column footing	12.00 m <sup>3</sup>	m <sup>3</sup>
( ii ) For column	4.50 m <sup>3</sup>	m <sup>3</sup>
( iii ) For lintel	2.50 m <sup>3</sup>	m <sup>3</sup>
5 Fabricating and placing in position torsteel reinforcement to size and shape including cost and conveyance of all materials, labour for uncoiling, straightening, cutting, bending, binding, lapping etc. complete excluding cost of reinforcement. (Rate is inclusive of cost of 22g binding wire.)	16.00 Qtl	Qtl
6 Supplying, fabricating and erecting in position to line and level anchor bolt assembly as per approved drawing including cost and conveyance of all materials, cost of welding electrodes, cost for threading bolts & nuts, washers, labour, hire charges for tools and plants, other incidentals etc complete.	3.00 Qtl	Qtl
7 Random rubble masonry in CM 1:6 and pointing with 1:3 for foundation and basement for all leads and lifts including cost and conveyance of all materials, labour, all		

- other incidentals etc. complete, excluding cost of cement. 7 m<sup>3</sup> m<sup>3</sup>
- 8 Brickwork in CM 1:5 using Ist class country burnt bricks for all leads and lifts including cost and conveyance of all materials, labour, scaffolding, other incidentals etc complete, excluding cost of cement. 11 m<sup>3</sup> m<sup>3</sup>
- 9 Supplying, fabricating and erecting in position in line and level 65X65X8mm framework and 50mm x 50mm x 8g x 8g or nearest weld mesh including cost and conveyance of all materials, painting with two coats of synthetic enamel paint over one coat iron primer( one coat primer to be applied before fabrication) after cleaning the surface by wire brushing / power brushing etc, all labour other incidentals etc. complete. (Rate is inclusive of necessary fixtures & fittings to brick/ concrete pillars/adjacent structures. But excluding cost of angles) 40 m<sup>2</sup> m<sup>2</sup>
- 10 Supplying, fabricating and erecting of structural steel work in built up sections conforming to IS 226/2062 for columns, for supporting roof truss to existing column, purlins, claddings, etc., including erecting in position, aligning the erected structures, bolting or welding wherever required as per approved drawing, cost and conveyance of all materials, all consumables, accessories including bolts and nuts, welding electrodes, hire charges for welding equipment , all labour, painting with one coat zinc chromite primer(Yellow colour) before fabrication after cleaning the surface by wire brushing / power brushing etc. complete. ( provision of bolt holes and connection of trusses to the existing columns are required

to be made at no extra cost ).	3.0 T	T
11 Supplying, fabricating and erecting in position following dia M.S. pipe class-B medium conforming to IS 1161/1239 for bracings, cladding runner etc.as per approved drawing including cleaning with wire brush/power brush and applying two coats of synthetic enamel paint of approved quality and colour over a coat of iron primer, cost and conveyance of all materials, cost of welding electrodes, cost of consumables, hire charges of welding equipment, all accessories, labour, other incidentals etc. complete.		
( i ) 65 NB	100 m	m
( ii) 50 NB	85 m	m
( iii ) 40 NB	400 m	m
( iv) 32 NB	25 m	m
12 Supplying and fixing cladding with coloured Aluminium Corrugated sheet 0.56mm thk or nearest available size with 8mm dia G.I 'J' bolts and nuts, G.I plain washers and bitumen washers with minimum overlaps of 150mm at ends and minimum two full corrugations on sides including cost and conveyance of materials, labour, other incidentals etc complete.	275 m <sup>2</sup>	10m <sup>2</sup>
13 Supplying and fixing cladding with fibre glass corrugated sheet(transparent) 0.56mm thk or nearest available size		

with 8mm dia G.I 'J' bolts and nuts, G.I plain washers and bitumen washers with minimum overlaps of 150mm at ends and minimum two full corrugations on sides including cost and conveyance of materials, labour, other incidentals etc complete.	20 m <sup>2</sup>	10m <sup>2</sup>	
14 Plastering with CM floated hard and trowelled smooth including cost and conveyance of all materials, labour, other incidentals etc complete, excluding cost of cement.			
a. 1:4, 12mm thk	145 m <sup>2</sup>	10m <sup>2</sup>	
b. 1:3, 15 mm thk	20 m <sup>2</sup>	10m <sup>2</sup>	
15 Backfilling the foundation trenches with clean excavated earth in layers not exceeding 150mm thick each and consolidating well including all labour, other incidentals etc complete.	5 m <sup>3</sup>	m <sup>3</sup>	
16 Providing and fixing 1.00m x 1.50 m Aluminium sliding window with M.S.grill of 10mm dia M.S. rod 10nos 32 x 5mm M.S. flat for peripherals and 4nos additional verticals embedded in P.C.C. 1:2:4 (cost of P.C.C. will be measured and paid separately) applying one coat iron primer and two coats of synthetic enamel paint and using 50x25x2mm & 25x25x1.2mm thk. Aluminium frames and channels, 5mm thk. Plain glass, rubber beadings,locking arrangements including cost and conveyance of all materials,labour,all other incidentals etc. complete.	6.00	Nos	E

- |  |                    |                  |
|--|--------------------|------------------|
| 17 Supplying and fixing to line and level, fabricated steel door of size 5.1m x 3.5m in two leaves using ISA 65x65x8 M.S. angles and 2mm thk M.S sheet as per approved drawing including applying two coats of synthetic enamel paint of approved quality and colour over a coat of iron primer etc complete. The rate quoted should be inclusive of cost and conveyance of all materials, labour, hire charges of tools & plants, other incidentals, cost of hinges, locking arrangements, etc. complete. | 2 No               | E                |
| 18 Painting with Exterior quality Acrylic emulsion paint of approved quality, brand and colour over one coat of cement primer after rubbing and cleaning the surface with wire brush, sand paper etc., including cost and conveyance of all materials, labour, other incidentals etc. complete.  | 145 m <sup>2</sup> | 10m <sup>2</sup> |
| 19 Painting steel structurals with two coats of Aluminium paint of approved quality,brand and colour after rubbing and cleaning the surface including cost and conveyance of all materials, labour, all other incidentals etc, complete.( The painting quantity shall be worked out based on calculation as 25 Sqm/T).   | 100 m <sup>2</sup> | m <sup>2</sup>   |
| 20 Supplying, fabricating and erecting in position in line and level 200mm dia, semicircular gutter using 0.8mm thick or nearest available thickness plain aluminium sheet on 32x5mm M.S flat bend to shape and welded to purlin 500mm c/c and fixed with stainless steel screws, nuts and washers as per approved drawing including cost and  |                    |                  |

conveyance of all materials, all accessories, cost of bolts, nuts and washers, cost of welding electrodes, hire charges of tools and plants, all labour, other incidentals, etc. complete. (Provision of bolt holes to be made as required at no extra cost and rate is inclusive of providing 150 dia PVC pipe connecting drops.)

Size up to 250mm

21 RM RM

21 Supplying and fixing in position PVC down water pipes (4kg/cm<sup>2</sup>) (Hycount or equivalent) 100 mm dia with necessary specials for connecting to gutter and to drain to suit the location as per approved drawing for all heights to correct line and level, fixing the pipe to columns by means of brackets at not less than 2m c/c, bolting or welding wherever required including cost and conveyance of all materials, all accessories, labour etc. complete.

30 m m

22 Supplying and stacking at site cement conforming to I.S. 8112/ 12269 (43/ 53) grade portland cement.

12.00 T T

23 Supplying and stacking at site torsteel reinforcement bars conforming to I.S. 1786 of various diametres.

1.80 T T

**TOTAL**

---



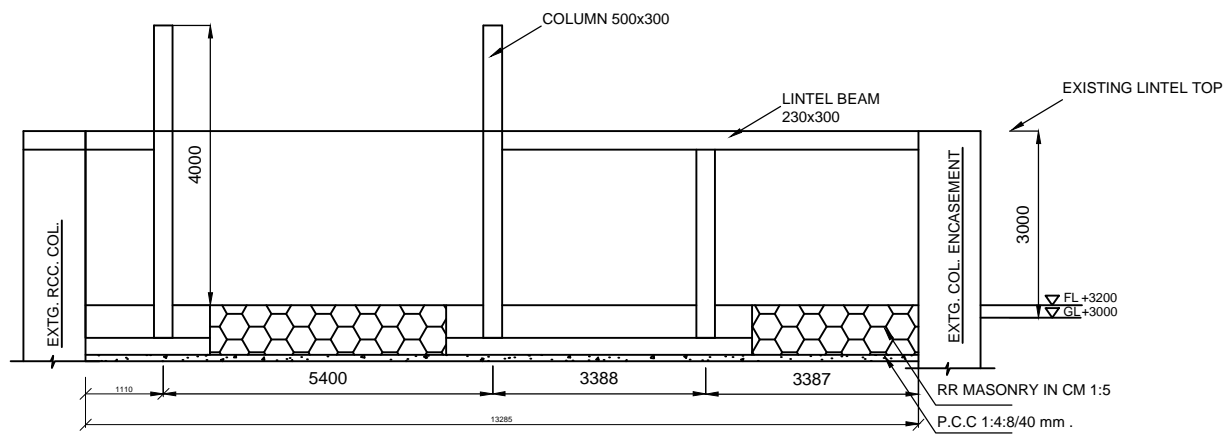
---

Date:  
Signature:  
Name & address of the tenderer:

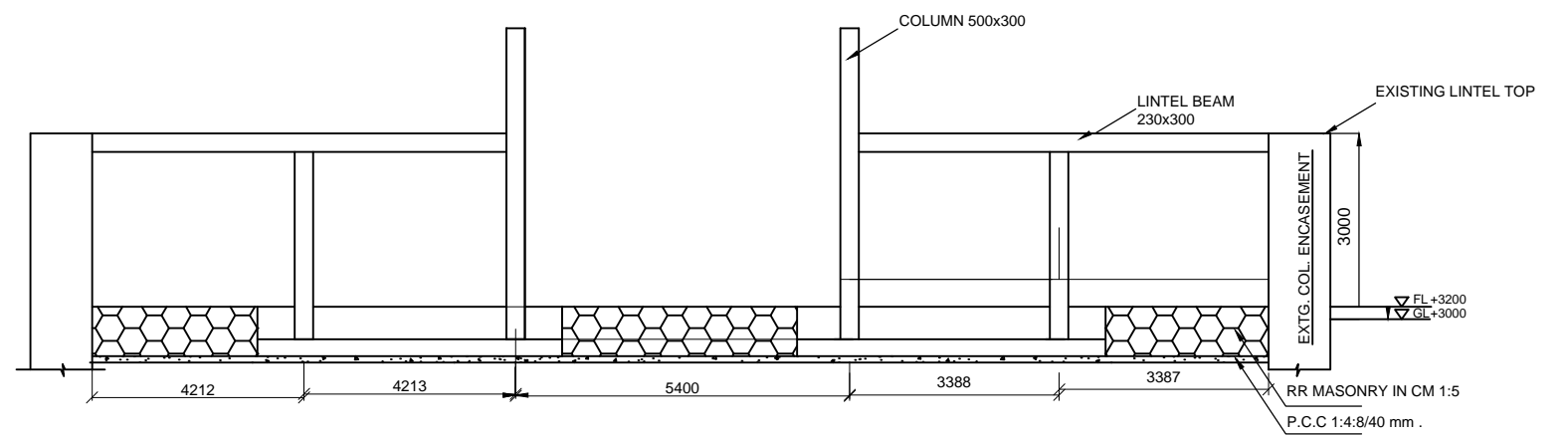
Sd/-  
**Asst.General Manager (CE)**



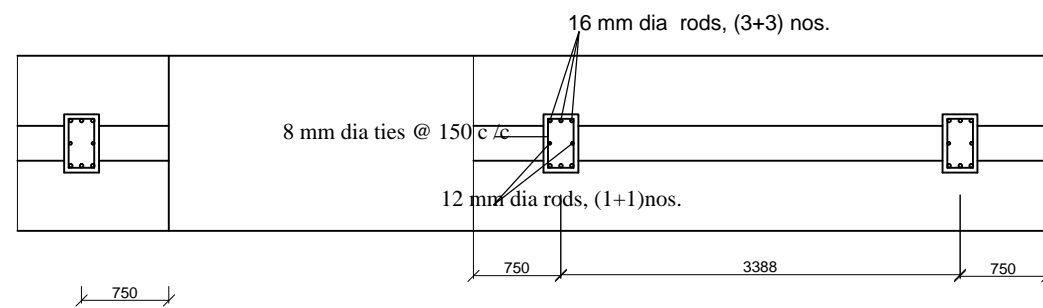




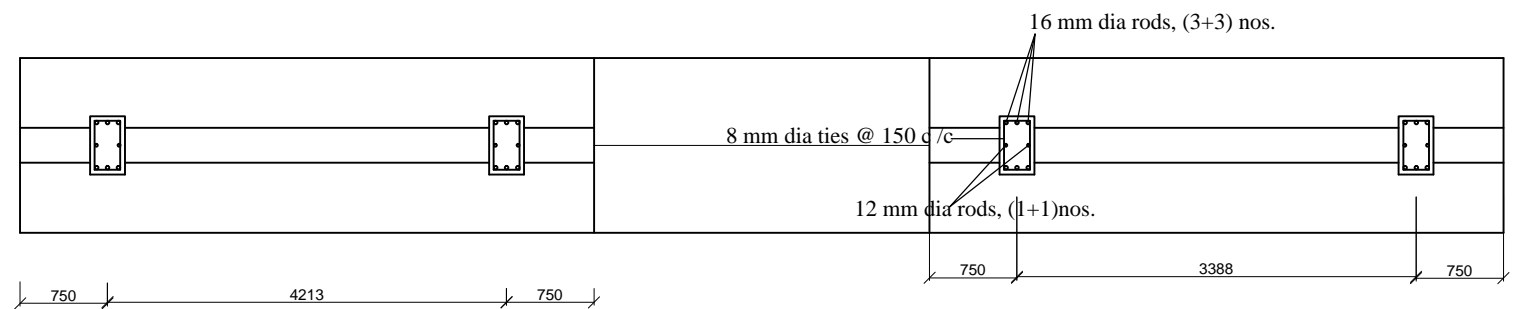
**GABLE SIDE (SOUTH) COLUMN FOUNDATION DETAILS - ELEVATION**



**GABLE SIDE (SOUTH) COLUMN FOUNDATION DETAILS - ELEVATION**




**PLAN OF COLUMN FOOTING**

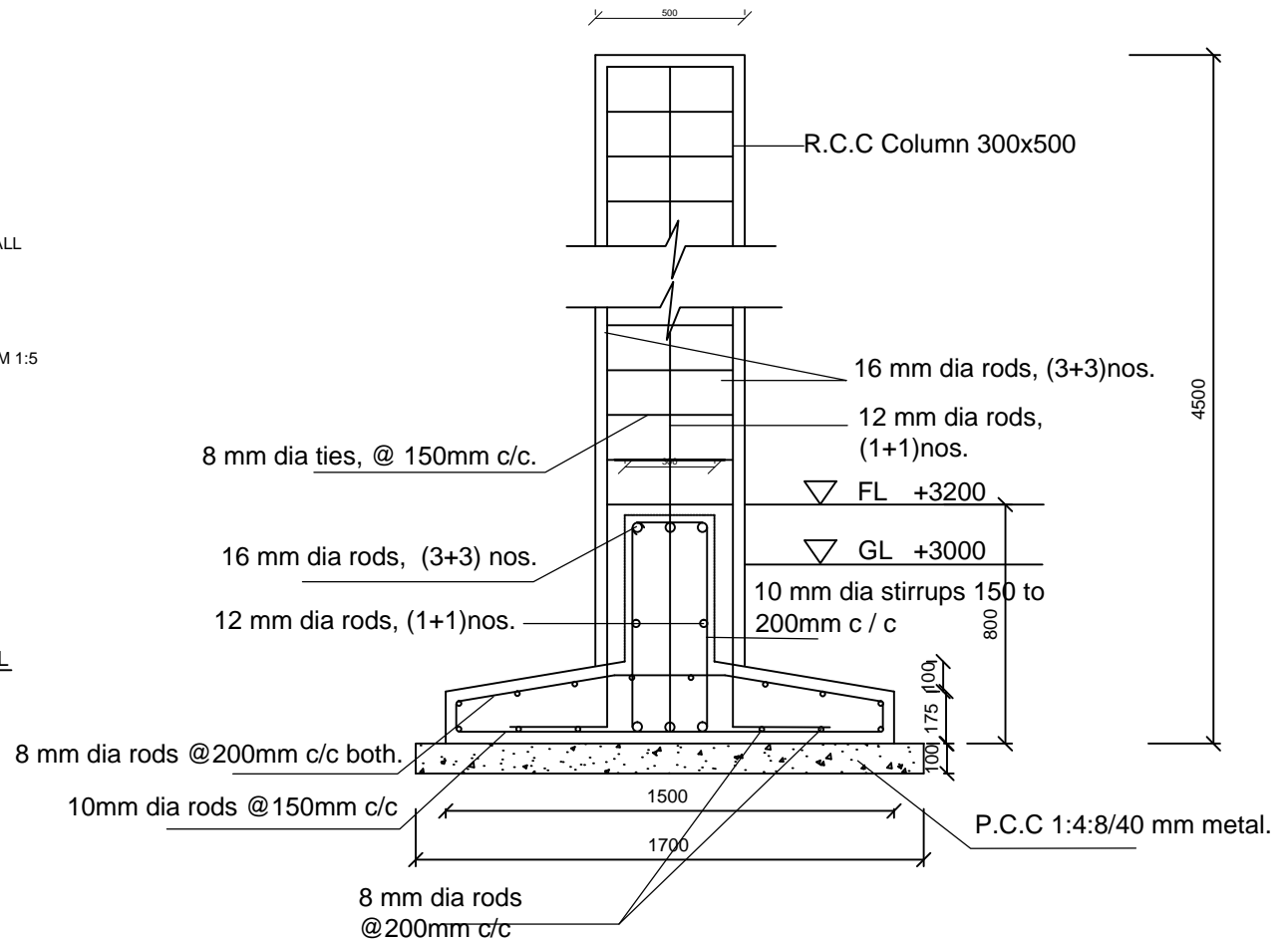
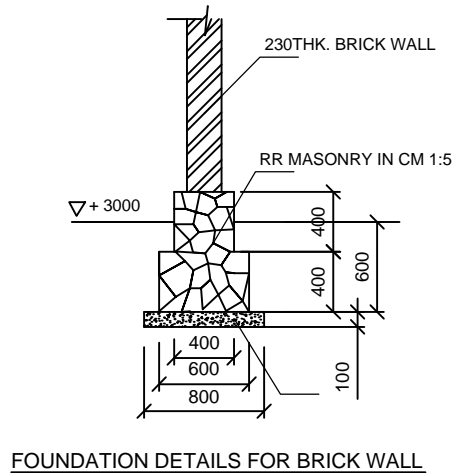


**PLAN OF COLUMN FOOTING**

**NOTE :-**


1. ALL DIMENSIONS ARE IN MILLIMETRES, UNLESS OTHERWISE SPECIFIED.
2. USE MIX CONFORMING TO I.S.456 FOR CONCRETING.
3. USE STEEL CONFORMING TO I.S.1786 FOR REINFORCEMENT.

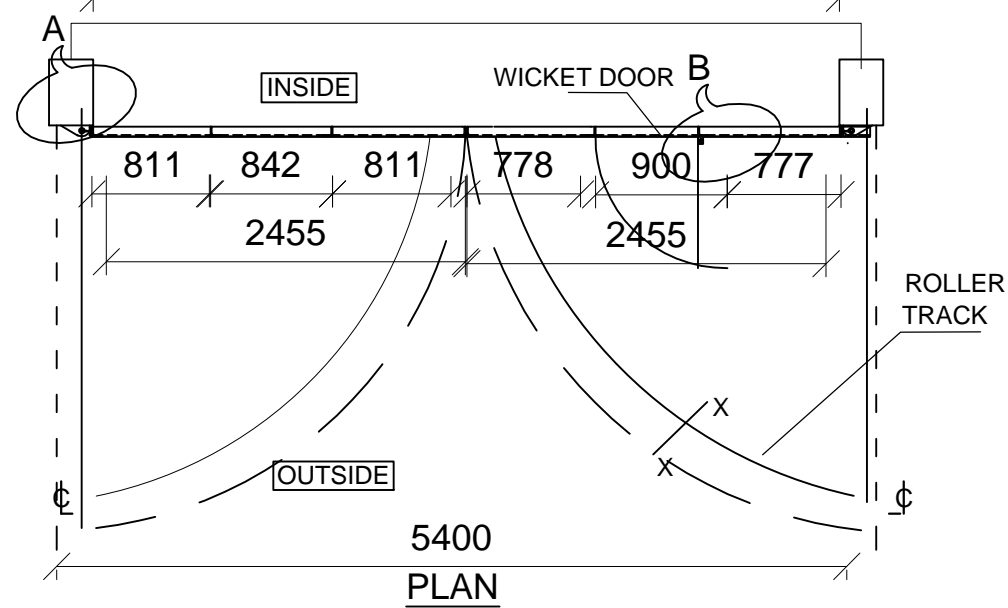
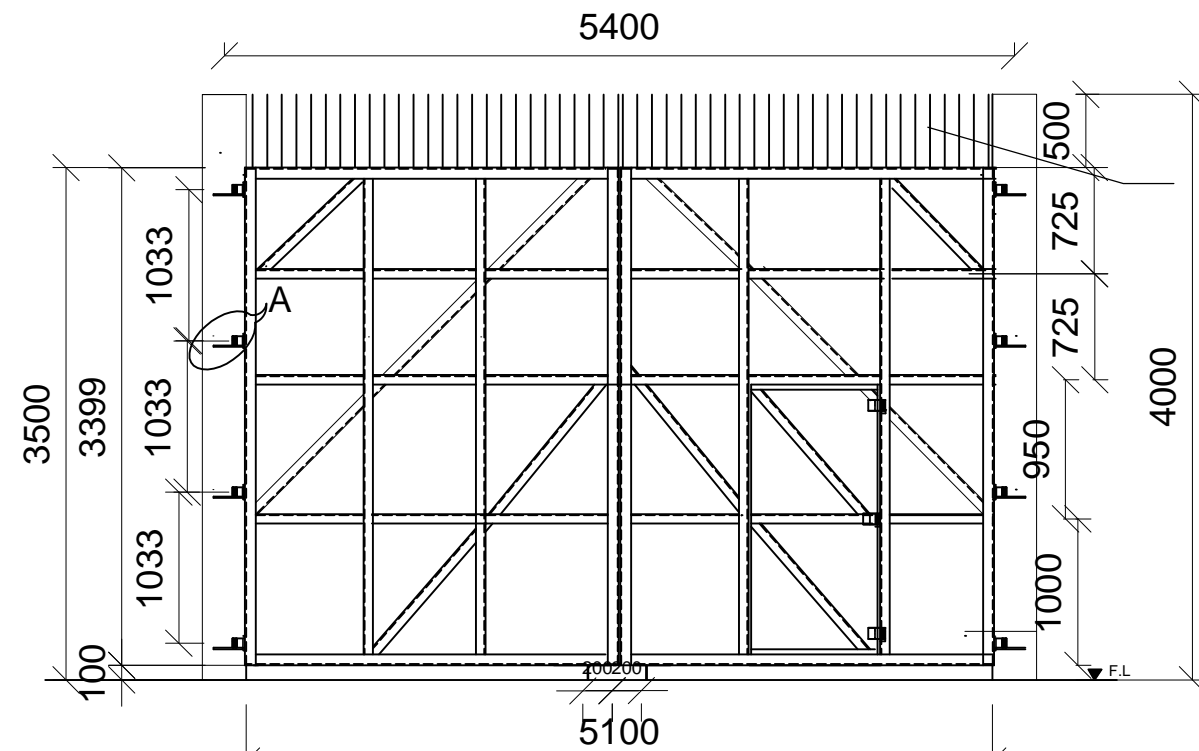
		<b>COCHIN SHIPYARD LIMITED</b> COCHIN - 682 015	
AGM(CE)		<b>GEBLE END COVERING OF SR          PIPE SHOP</b> FOUNDATION DETAILS - GABLE SIDE COLUMNS (PLAN & ELEVATION)	
CHECKED			
DRAWN	MANUJA		
DATE : 18.12.2011	SCALE - NTS	DWG.No. M5/2011	SH. No. 3



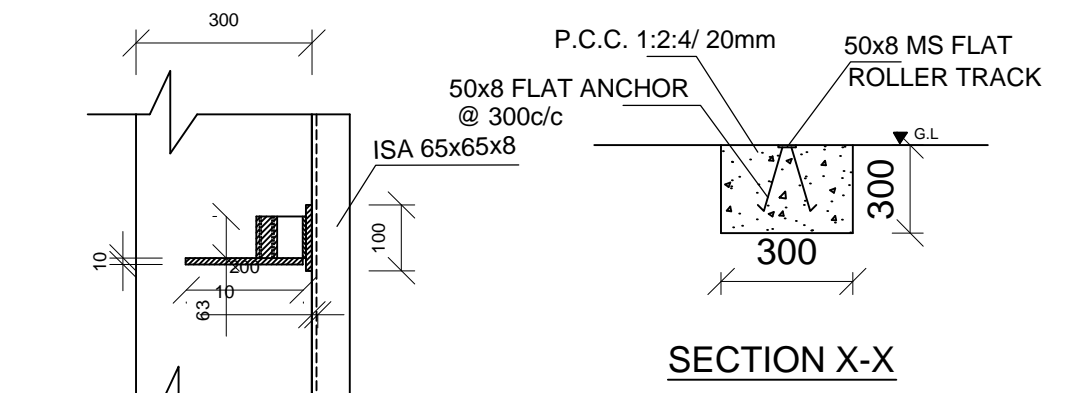
**NOTE :-**

1. ALL DIMENSIONS ARE IN MILLIMETRES, UNLESS OTHERWISE SPECIFIED.
2. USE MIX CONFORMING TO I.S.456 FOR CONCRETING.
3. USE STEEL CONFORMING TO I.S.1786 FOR REINFORCEMENT.

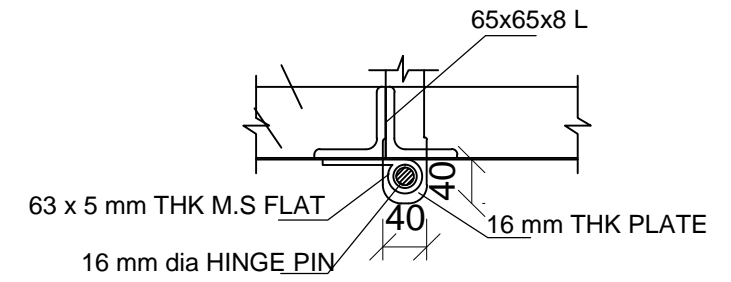
		COCHIN SHIPYARD LIMITED	
		COCHIN - 682 015	
AGM(CE)		GABLE END COVERING OF SR PIPE SHOP FOUNDATION & COLUMN DETAILS - (SECTION)	
CHECKED			
DRAWN	MANUJA		
DATE :	SCALE- NTS	DWG.NO-M5/2011	SH. NO.4



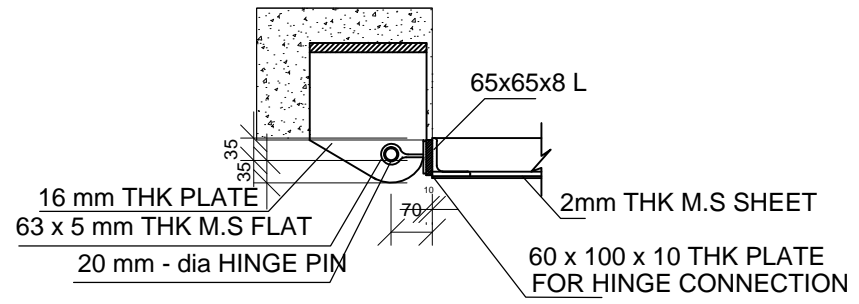
NOTE




SECTION X-X



DETAILS - B

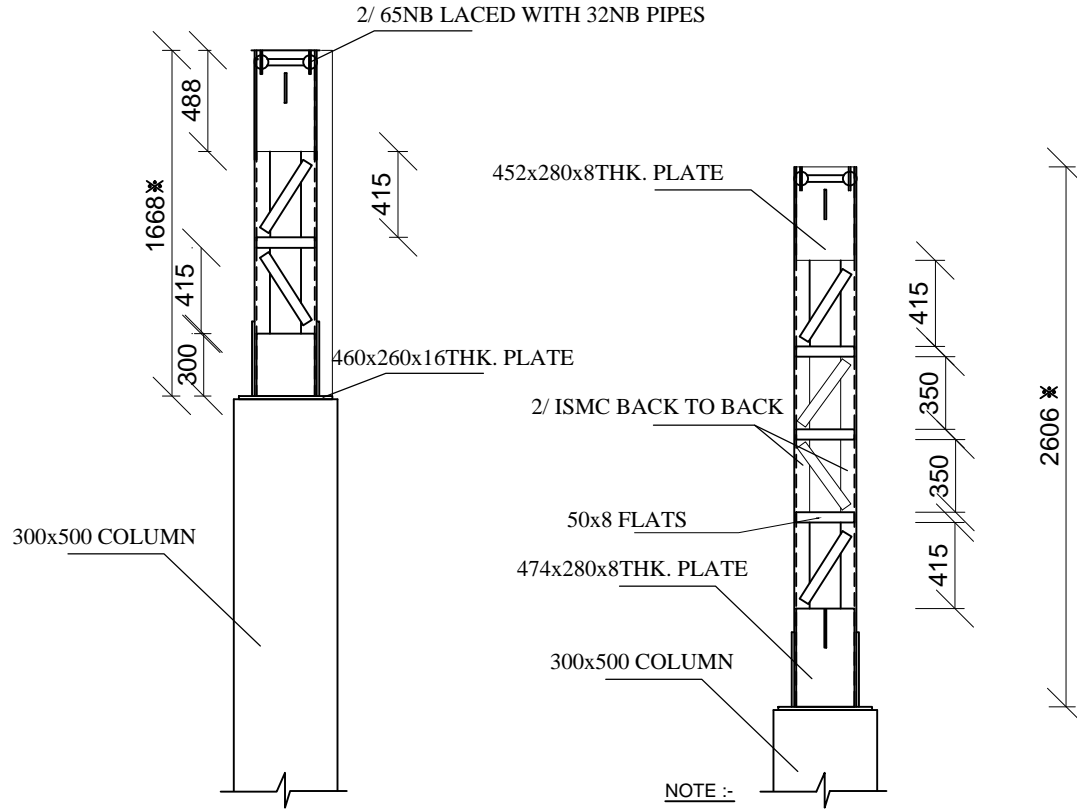


DETAILS - A

		<b>COCHIN SHIPYARD LIMITED</b>	
		COCHIN - 682 015	
AGM(CE)		<u>GABLE END COVERING FOR SHIP REPAIR PIPE SHOP</u>	
CHECKED		DETAILS OF DOOR	
DRAWN	MANUJA		
DATE : 18.12.2011	SCALE - NTS	DWG.No. M5/2011	SH. No. 5



\* TO BE CHECK AT SITE BEFORE EXECUTION.




DETAILS OF GABLE SIDE COLUMN Y

DETAILS OF GABLE SIDE COLUMN X

NOTE :-

1. ALL DIMENSIONS ARE IN MILLIMETRES, UNLESS OTHERWISE SPECIFIED.
2. USE STEEL CONFORMING TO I.S 2062 TESTED QUALITY FOR STRUCTURALS.
3. UNLESS OTHERWISE SPECIFIED USE 6mm FILLET CONTINUOUS WELD FOR ALL WELDED CONNECTION AND MINIMUM LENGTH OF WELD SHALL BE 75mm.

		<b>COCHIN SHIPYARD LIMITED</b> COCHIN - 682 015	
		GABLE END COVERING FOR SR PIPE SHOP	
AGM(CE)		<b>GABLE SIDE COLUMNS - DETAILS (NORTH SIDE)</b>	
CHECKED			
DRAWN	MANUJA		
DATE :	SCALE- NTS	DWG.NO- M5/2011	SH. NO.7