



## COCHIN SHIPYARD LIMITED

(A Government of India Enterprise)

P.O. BAG NO.1653 COCHIN-682 015 INDIA

Tel. No. +91 (484) 2361181/2351181/2366340

Fax No. +91 (484) 2370897/373902

E- Mail: cochinshipyard@vsnl.com

civil@cochinshipyard.com

Web: www.cochinshipyard.com

No. CIV/062/2010/AGM (CE)

07-07-2010

### **TENDER NOTICE**

Sealed competitive tenders in the prescribed form are invited on behalf of Cochin Shipyard Limited from experienced contractors for the under mentioned work so as to reach the undersigned on or before the date and time mentioned below:

- Name of work : Construction of storage room for gamma radiography device
- Earnest Money to be deposited : Rs.6000.00/-
- Cost of tender form : 100 + ST (4%)  
*(Those who down load the tender form from website also will be required to remit the cost Along with the tender documents in the form of DD)*
- Last date and time of issue of tender forms : 19-07-2010 up to 15.00 hrs.
- Last date and time of receipt of tender : 20-07-2010 at 14.00 hrs.
- Date and time of opening of tender box : 20-07-2010 at 14.30 hrs  
*(Price bid of those tenders who submitted EMD and certificate signed by the contractor will be opened on a later date)*
- Time of completion of work : 70 days
- Short description of work : The work consists of sectioning and leveling, earth work, PCC 1:5:10, brick work, RCC 1:2:4, plastering, flooring with red oxide, painting, providing steel door and chainlink fencing with gate.

Price bid of only those contractors who have submitted proof of remittance of EMD, cost of tender forms and certificate signed by the contractor shall only be opened on a later date after giving notice to the bidders. The rates quoted should be inclusive of all taxes and duties.

The tender documents can be obtained from the office of the undersigned during office hours till the last date and time of issue of Tenders. All the tender documents (NIT, General Conditions of Contract, Special Conditions, specification & Tender Schedule) are available on Cochin Shipyard's website [www.cochinshipyard.com](http://www.cochinshipyard.com) and Govt. website <http://tenders.gov.in/department.asp>. Tenderers can download the forms and use the same for submission of the tenders.

Sd/-

Assistant General Manager (Civil)

**CIVIL ENGINEERING DEPARTMENT**

CIV/062/2010/AGM(CE)

**Name of Work: Construction of storage room for gamma radiography device****TENDER SCHEDULE**

SI No	Description of works	Qty	Unit	Rate(Rs)	Amount(Rs)
				(Both in words and figures)	
1	Sectioning and levelling the area up to 100mm removal of debris and disposal within a lead of 50m and up to 150m including all labour, other incidentals. Complete.	30.00	m <sup>2</sup>	10m <sup>2</sup>	
2	Earth work excavaton in ordinary soil and depositing on bank with lead and lift as follows including neat banking etc complete.	10.50	m <sup>3</sup>	10m <sup>3</sup>	
3	Providing and laying plain cement concrete 1:5:10, using 40mm down graded IS nominal size hard broken metal including cost and conveyance of all materials,labour for mixing, laying, consolidating curing etc.complete but excluding cost of cement.	2.00	m <sup>3</sup>	m <sup>3</sup>	
4	Random rubble masonry in cement mortar 1:6 & pointing with CM 1:3 for foundation and basement including cost and conveyance of all materials, labour, other incidentals etc complete, excluding cost of cement.	7.00	m <sup>3</sup>	m <sup>3</sup>	
5	Filling inside basement with red earth and consolidating in layers not exceeding 150mm thick each in line and level including cost and conveyance of all materials, labour, other incidentals etc. complete.	2.50	m <sup>3</sup>	m <sup>3</sup>	
6	Reinforcement for RCC work including cost and conveyance of all materials, labor for, uncoiling,straightening,				

cutting,bending,tying with 22G binding wire etc.complete but excluding cost of steel (mild steel or tor steel) but including cost of binding wire.	3.00	Qtl	Qtl
7 Providing and laying reinforced cement concrete 1:2:4 using 20mm down graded broken granite metal for slabs, lintels and beams including cost and conveyance of all materials, labour for mixing, laying, consolidating, curing etc.complete but excluding cost of cement and steel.	5.00	m <sup>3</sup>	m <sup>3</sup>
8 Brick work using first class country burnt bricks (21x10x7cm) using CM 1:5, including cost and conveyance of all materials, labour, other incidentals etc complete, excluding cost of cement.	8.00	m <sup>3</sup>	m <sup>3</sup>
i) Super structure in ground floor upto 5m ht	8.00	m <sup>3</sup>	m <sup>3</sup>
9 Plastering with CM floated hard and trowelled smooth including cost and conveyance of all materials, labour, curing etc.complete as directed by the Engineer-in- charge but excluding cost of cement.	120.00	m <sup>2</sup>	10m <sup>2</sup>
1:3, 15mm thk.			
10 Providing neat cement flushing coat over the plastered surface including cost and conveyance of all materials, labour, other incidentals, curing etc.complete but excluding cost of cement.	35.00	m <sup>2</sup>	10m <sup>2</sup>
11 Plastering over floor with CM 1:3, 15mm thick one coat including red/black oxide flushing coat (using red /black oxide @ 10% by weight of cement) including cost and conveyance of all materials,labour, other incidentals etc. complete. but excluding cost of cement.	9.00	m <sup>2</sup>	10m <sup>2</sup>
12 Supplying and laying inter locking paving tiles 60mm thick of approved quality and colour over consolidated area with			

quarry dust in 100mm thick to line and level including cost and conveyance of all materials, labour, other incidentals, etc. complete.	20.00 m <sup>2</sup>	m <sup>2</sup>
13 Plastering to the underside of RCC slab with cement mortar 1:3, 6mm thick including hacking the location, floated hard and trowelled smooth, including cost and conveyance of all materials, labour, other incidentals curing etc. complete but excluding cost of cement.	11.00 m <sup>2</sup>	10m <sup>2</sup>
14 Painting of cement plastered surface with one coat of white cement wash of approved quality after rubbing and cleaning the surface including cost and conveyance of all materials, labour, other incidentals etc complete.	115.00 m <sup>2</sup>	10m <sup>2</sup>
15 Painting with cement primer of approved quality and shade after rubbing and cleaning the surface including cost and conveyance of all materials,labour, scaffolding, other incidentals, curing (wherever required) etc.complete.	115.00 m <sup>2</sup>	10m <sup>2</sup>
16 Painting with two coats ready mixed plastic emulsion paint of approved quality and colour over one coat cement primer after rubbing and cleaning the surface using wire brush, sand paper etc. wherever required including cost and conveyance of all materials, labour, scaffolding other incidentals etc. complete.	50.00 m <sup>2</sup>	10m <sup>2</sup>
17 Painting with two coats exterior quality Acrylic emulsion paint of approved quality and colour over one coat cement primer after rubbing and cleaning the surface using wire brush,sand paper etc. including cost and conveyance of all materials labour, scaffolding other incidentals etc. complete.	50.00 m <sup>2</sup>	10m <sup>2</sup>

- |    |  |                      |                |
|----|--|----------------------|----------------|
| 18 | Supplying and Fabrication of all types of structural steel works by straightening, cutting & welding using all types of steel sections plates, flats of any size and weight as per approved drawing or as instructed, erecting in position to line and level by welding/bolting embedding in concrete including hire charges for tools and plants, cost of electrodes, other incidentals etc. complete all as directed by the Engineer-in-charge.  | 0.35 T               | T              |
| 19 | Providing and fixing chain link fencing for a height of approx 1.50 m including providing and fixing 40NB MS pipe (support at every 2 meter centre-to-centre. pipe height should be minimum 2m) in position with necessary earth work excavation and providing plain cement concrete 1:2:4 (size of earthwork excavation is 300 x 300 x 600) using 20mm nominal aggregate and refilling etc. complete and providing and fixing in position approx 10 gauge GI chain link mesh stiffened with peripheral MS angle (40 x 40 x 6mm or nearest) and flat (25 x 3mm or nearest), fixing the frame to MS tube by welding/ bolting and providing two coats of synthetic enamel paint over one coat iron primer after cleaning the surface by wire brushing / power brushing etc. Rate is inclusive of cost of all materials, labour, conveyance, other incidentals, etc complete but excluding cost of cement. (Mode of measurement: length X height) | 35.00 m <sup>2</sup> | m <sup>2</sup> |
| 20 | Supplying, fabricating and erecting in position in line and level the steel fabricated gate of approx size 1.5m x 1.5 m ht in double leaves using 32 NB class B medium M.S pipes and 50mm x 50mm x 8g x 8g or nearest weld mesh including cost and conveyance of all materials, locking arrangements, hinges, painting with two coats of synthetic enamel paint over one coat iron primer (one coat primer to be applied before fabrication) after cleaning the surface by wire brushing / power brushing etc, all labour other incidentals etc. complete. (Rate is inclusive of necessary fixtures & fittings to brick/ concrete pillars/adjacent structures.)  | 1.00 No              | E              |

21	Supplying and fixing single leaf steel door ( 750x1800 mm) with 8 mm MS plate on 40x40x6 mm angle shutter frame and door frame using 50x50x6mm angles and flats, painting two coats of synthetic enamel paint over one coat of iron primer including all necessary screws,hinges, aldrops, locking arrangements, all other incidentals etc.complete	1.00	No	E
22	Painting structurals with two coat synthetic enamel paint of approved quality and colour over one coat of iron primer after rubbing and cleaning the surface using wire brush, sand paper etc. wherever required including cost and conveyance of all materials, labour,scaffolding other incidentals etc. complete.	4.50	m <sup>2</sup>	10m <sup>2</sup>
23	Supplying and stacking at site TOR steel reinforcement bars of different diameters conforming to relevant IS .	0.33	T	T
24	Supplying and storing at site ordinary portland cement conforming to relevant IS .	4.20	T	T
<b>Total</b>				

Signature:  
 Name & Address of }  
 Tenderer }  
 Date:

Sd/-  
**ASSISTANT GENERAL MANAGER (CE)**

## **CIVIL ENGINEERING DEPARTMENT**

No.CIV/062/2010/AGM (CE)

### **SPECIAL CONDITIONS**

Name of work: **Construction of storage room for gamma radiography device**

1. The conditions enumerated below are in addition to the General conditions of contract given in “Conditions of contract and instructions to Tenderers of CSL” and will have precedence over them.
2. “General Conditions of Contract (GCC) and Instructions to Tenderers ” is available in the CSL website. The tenderer shall submit his tender document including GCC. Although, it is permissible to submit the tender without the copy of GCC, while entering into agreement by the successful tenderer, the GCC shall be duly signed by both the parties and form part of the agreement. As such, it is deemed that the tenderer has made reference to the GCC in the website or otherwise, and has full knowledge of its contents, although it is not signed and attached with the tender.
3. In the General Conditions of Contract DGM (Civil) should be read as AGM (Civil) who will be the Engineer- in- charge.
4. All corrigenda, addenda, amendments and clarifications to Tender Specifications will be hosted in the website [www.cochinshipyard.com](http://www.cochinshipyard.com) and not in the newspaper. Bidders shall keep themselves updated with all such developments till the last date and time of submission of tender
5. The tender for the work will be based on Single Bid system. The tender has to be submitted in two covers.

#### **5.1 Cover A:**

Cover A shall contain EMD for Rs.6000.00/- in the form of DD/TDR drawn in favour of Cochin Shipyard Limited and the following Certificates signed by the contractor.

1. **“ I / WE COMPLY WITH ALL CONDITIONS OF TENDER BY CSL AND CONFIRM THAT RATES QUOTED IN THE PRICE BID ARE INCLUSIVE OF ALL TAXES AND DUTIES INCLUDING SERVICE TAX IF APPLICABLE. I / WE ALSO CONFIRM THAT COVER B (PRICE BID) DO NOT CONTAIN ANY CONDITIONS ”**
2. **“ I / WE HAVE NOT MADE ANY PAYMENT OR ILLEGAL GRATIFICATION TO ANY PERSON/AUTHORITY CONNECTED WITH THE BID PROCESS SO AS TO INFLUENCE THE BID PROCESS AND HAVE NOT COMMITTED ANY OFFENCE UNDER THE PC ACT IN CONNECTION WITH THE BID.”**

**Cover B:**

Financial /price bid - shall contain the rates and amount for each item of work. There shall not be any clause, added by the tenderers in the price bid.

- 5.2 The cover A & cover B shall then put together in another cover marked Cover C, which shall be sealed and superscribed with name of work, the address & Contact No. of contractor.
  - 5.3 Cover C shall be opened at 14:30 hrs on 20-07-2010 at the office of AGM (Civil). At first cover A containing EMD and certificates from the contractor shall be opened. In case the earnest money is not deposited or is not in order, the tender shall be returned to the tenderer unopened either on the spot, if the tenderer is present, or later by post. Only a mention to this effect shall be made in the tender opening register.
  - 5.4 Price bid (cover B) of those tenders who have submitted EMD and the undertaking that Cover B do not contain any conditions shall only be opened on a later date after giving notice to the tenderers.
- 6 Late tenders and tenders with conditions will be summarily rejected.
  - 7 The acceptance of a tender will rest with AGM (Civil) who does not bind himself to accept the lowest tender and reserves to himself the authority to reject any or all of the tenders received without assigning any reason
  - 8 The tenderer should keep open the validity of the tender normally for 90 days from the date fixed for its opening. However, it is also obligatory for the tenderer to keep the validity open for another 60 days for which request in writing/telegram by the AGM (civil), before the expiry of the original validity, would be intimated. The receipt of the intimation of the AGM (civil) should be acknowledged. Should any tenderer withdraw his tender before these periods, or makes any modifications in the terms and conditions of the tender which are not acceptable to CSL, the earnest money deposited by the tenderers shall be forfeited.
  - 9 If any difference is found in different parts of the tender documents, the following will be in order of precedence.
    - (i) Special conditions
    - (ii) Schedule
    - (iii) Specifications
    - (iv) Condition of contract and instructions to tenderers.
  - 10 Rates shall be quoted both in figures and words. Rates quoted should be inclusive of all taxes and duties, including service tax if any, in accordance with the tender schedule. The firm/contractor has to separately furnish the rates and amounts of taxes and duties included in the rate quoted.
  - 11 The rates quoted by the contractor shall be for finished items of works including supplying appropriate materials, labour, equipment/tools, conveyance etc. all complete, unless specified in the tender schedule.

- 12 The tenderers are expected to have inspected the site, before quoting, read the conditions thoroughly and understand the works in all respect. Clarifications, if any may be obtained from the Assistant General Manager (CE) before the tender is submitted, and if clarifications/details are not obtained before the tender is submitted, no claim on this account will be admitted.
- 13 10% of the bill amount (less EMD) will be deducted as security deposit and the same shall be released after the successful completion of the observation period of 6 months. The contractor has to make good all defects during the observation period at his own cost.
- 14 The time of completion of work of 70 days shall be reckoned from the 7<sup>th</sup> day of the date of issue of the work order or the date of handing over the site whichever is later.
- 15 The contractor or his authorized technically qualified representative shall be available at CSL throughout the period of contract for receiving instructions from department, arranging and executing the work.
- 16 The Contractor / representative shall report at the office of the Engineer-in-charge on all working days before 8:30 hrs and receive instruction regarding the works.
- 17 The Contractor may have to work round the clock including holidays, if required to complete the work in time without any extra cost. However works executing out of office hours and holiday shall be informed to the Engineer-in-charge well advance and get his clearance.
- 18 The normal working time of the CSL is from 8.15 A.M. to 5.00 P.M on all weekdays and Saturdays with half an hour interval from 12.15 noon to 12.45 P.M. All Sundays, second Saturday and fourth Saturday are holidays. If the Contractor wishes to carry out the work beyond normal working hours and or on holidays, he should get specific approval from the Engineer-in-Charge for the same. Necessary supervision will be arranged by the department and the expenditure to be incurred in this connection will be borne by the department.
- 19 All labour, skilled or unskilled shall be provided by the contractor. Settling any dispute with the labour/ subcontractor will be contractor's responsibility. The workers engaged for works should have sufficient knowledge and experience in the respective fields. This shall be proved to the Engineer-in-charge.
- 20 The contractor shall bring all necessary machinery and equipments required for the work.
- 21 Cochin shipyard reserves the right to award the work to one or more contractors or delete any part of the work from the scope of the contract or cancel the tender without assigning any reason.
- 22 The contractor is expected to acquaint himself with the site conditions, labour situation, wage and benefits applicable to labourers, working hours, out turn of work by labour and the fluctuations which are likely to happen till the work is completed on all the above aspects prior to quoting the rates. The submission of a tender by tenderer implies that he has made himself aware of all the above situations and conditions. Any extra claim on this account will not be entertained.

- 23 The work shall be carried out without damaging any of the existing structures/ structures under construction in the locality.
- 24 The contractor shall submit a detailed time schedule in conformity with the completion time stipulated in the tender within 7 days from the date of issue of letter awarding the work.
- 25 All materials to be used on the work will have to be got approved by the Engineer-in-charge before use. Unless otherwise decided by the Engineer-in-charge all the materials are to be procured by the contractor.
- 26 Contractor shall work in close co-ordination with other agencies working in the same work site at the same time. The space for storage of materials for each work should also be decided by mutual agreement among the contractors working in the same area. CSL will not entertain any claim regarding non-availability of space for storing materials nor can enter into any discussion to settle the dispute between contractors regarding usage of space for storing materials etc.
- 27 Electric power supply from KSEB grid is available in CSL but cannot ensure uninterrupted power supply. There can be restriction in supply of power by KSEB. Contractors shall take note of this situation.
- 28 The Following services will be issued free of cost depending on availability. Contractor has to make his own arrangements to avail the same at his risk and subject to satisfying statutory rules and regulations if any.
  - a) Water
  - b) Electricity
- 29 Waste materials are to be cleared from site on a day-to-day basis. Each area of working is to be cordoned off with necessary signboards and barriers to ensure safe transportation of men and material by CSL in the area as directed by the Engineer-in-charge.
- 30 All materials, equipments and services required for the execution of the work, other than facilities mentioned under clause 28 above should be supplied by the contractor.
- 31 AGM (Civil) shall have the right to take possession of or use completed or partially completed part of the work. Such possession or use shall not be deemed to be an acceptance of such work. After completion of all the works, the contractor has to clear the debris at the site and the final bill shall be paid only after the site is cleared off all the materials.
- 32 It is the responsibility of the contractor to follow all safety rules and regulations in force, during the currency of contract in CSL, and any violation of the same during the course of work will be at the risk and cost of the contractor and will attract penal action.
- 33 The contractor shall not construct any structure, even of temporary nature, for any purpose at site, except with the written permission of the Engineer-in-Charge of the work and any construction so put up shall be removed by the contractor whenever the Engineer-in- Charge calls upon the contractor to do so.

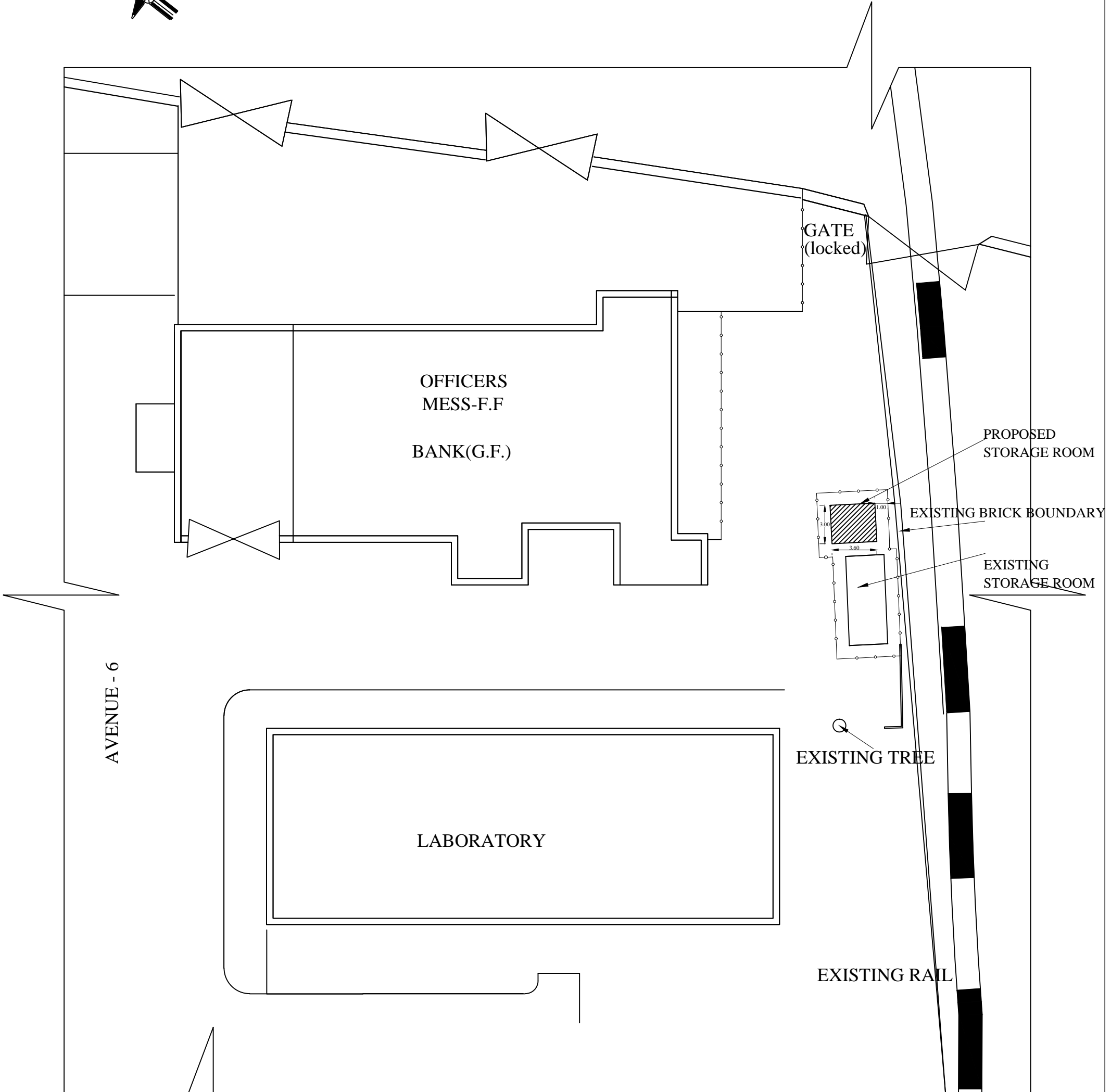
- 34 The quantities given in the Schedule of quantities are only approximate and payment will be made as per actual quantity of work done and rate quoted.
- 35 For all items brought from outside to be used/ consumed on the work, Material Declaration forms with work order number shall be obtained from Security section and the same shall be submitted at the office of the Engineer-in-Charge.
- 36 For works at height and excavation / trench openings and night work, Work permit from safety department has to be obtained.
- 37 Welding Sets without ELCB and Safety Relay will not be permitted at site. Necessary instructions regarding safety shall be strictly adhered to by the agency during the course of the work.
- 38 For the completed items of the work 75% of the net amount payable on each bill can be paid as advance by CSL at the discretion of AGM (Civil), on a request by the contractor and a recommendation of the Engineer-in-charge and production of an undertaking on approved format by the contractor. Balance amount will be paid after scrutiny and check of the bill.
- 39 The tenderer shall specify the PAN No: allotted to him so that DGM (Fin) can ascertain his liability to the Income Tax Department. The income tax/KVAT/ any other statutory taxes, as per the rules /directions of the concerned departments, prevailing in force at the time of payment of bills will be deducted while making payment or when crediting the amount to the account.
- 40 The contractors registered under the Kerala value Added Tax Act, 2003 shall produce a Liability Certificate, along with the bill, in relation to the works contract, from the Assessing Authority showing the tax liability or tax remittance as the case may be and the works contract tax deduction will be made accordingly. Otherwise Works Contract tax @8% in the case of registered contractors and @10% in the case of unregistered contractors will be deducted from the payment released against the contract.
- 41 Occupational Health, Safety & Environmental requirements
  - a) The contractor (or a sub-contractor performing work on behalf of the contractor) is deemed to comply with the Occupational health, safety and environmental policy of the company and also to all operational controls/standard operating procedures and shall undertake the work in total compliance with the requirements of the established Integrated Management System (IMS) of the company.
  - b) The Contractor shall undertake the work in total compliance with all applicable legal/statutory requirements related to occupational health, safety and environment effective in the state of Kerala.

- c) It is the sole responsibility of the contractor to assure that any sub-contractor/s who shall perform works in company lands/facilities/worksites on behalf of the contractor, is also following all requirements related to the Integrated Management System of the company and the health/safety/environmental Rules effective in the state.
  - d) The contractor shall provide/implement and operate/practice all occupational health, safety and environmental management measures/facilities, for their period of contract, in their activities/at their work sites, which shall be required according to the IMS of the company or that required by the health/safety/environmental Rules established and effective in the state, at their own cost.
  - e) If any contractor failed to comply with or violated any clauses/requirements of occupational health, safety and environmental Rules effective in the state, in their activities or at work sites and the same shall be exposed to the government or any competent authorities upon inspections, the contractor shall be solely responsible for all liabilities caused by his/her action and shall be responsible for paying the penalty and taking stipulated corrective actions insisted by the authorities within the specified time, at their own cost. Any liability to the company in this regard needs to be compensated by the contractor.
  - f) Upon completion of the work, contractor shall clear the area and shall not leave any Occupational health/safety/environmental liabilities to the company, from their activities at the worksites.
- 42 Cochin Shipyard Limited reserves the right to terminate the Contract at short notice in case the Contractor's performance is found not satisfactory with regard to progress of work, quality, time factor, labour dispute with their workers, poor safety records etc., and other contractual obligations. No claim whatsoever will be entertained by Cochin Shipyard Limited on this account. If the contract is terminated, CSL will arrange the work through other agencies at the risk and cost of the contractor.
- 43 Tenders duly filled shall be deposited in the Tender Box kept in the office of the AGM (Civil), Cochin Shipyard Ltd. before the date and time as specified in the Tender Notice.

Sd/-

Assistant General Manager (Civil)

Signature, Name &  
Address of contractor:  
Date:



ALL DIMENSIONS ARE IN METRESS

## LOCATION PLAN

LEGEND:-

—○— :- FENCING



COCHIN SHIPYARD LIMITED  
COCHIN - 682 015

DGM (CE)

AGM-II (CE)

DRAWN

CONSTRUCTION OF STORAGE ROOM  
FOR GAMMA RADIOGRAPHY DEVICE  
LOCATION PLAN

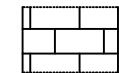
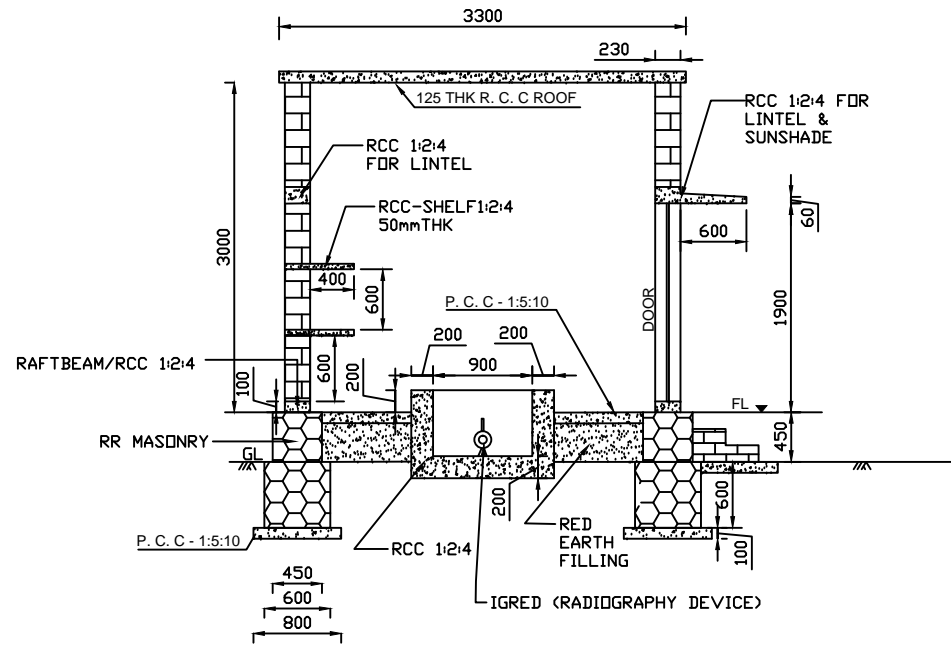
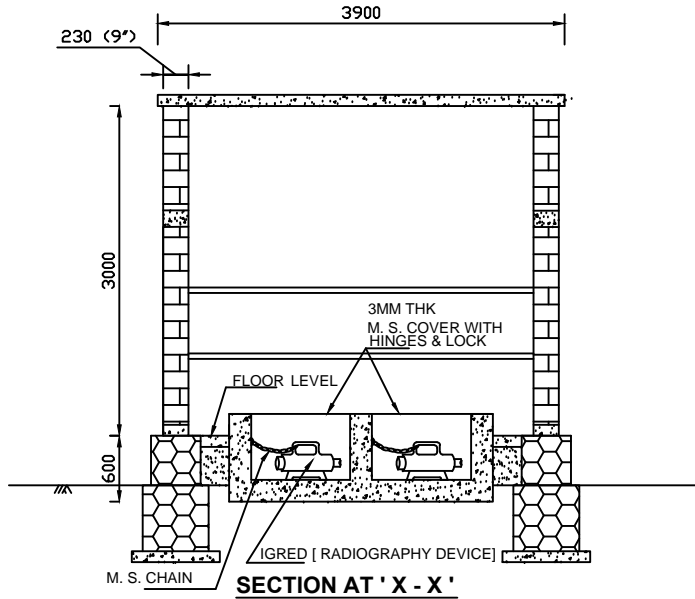
DATE :

SCALE :

DWG.No.

SH No :

# RADIOGRAPHY CAMERA STORAGE ROOM



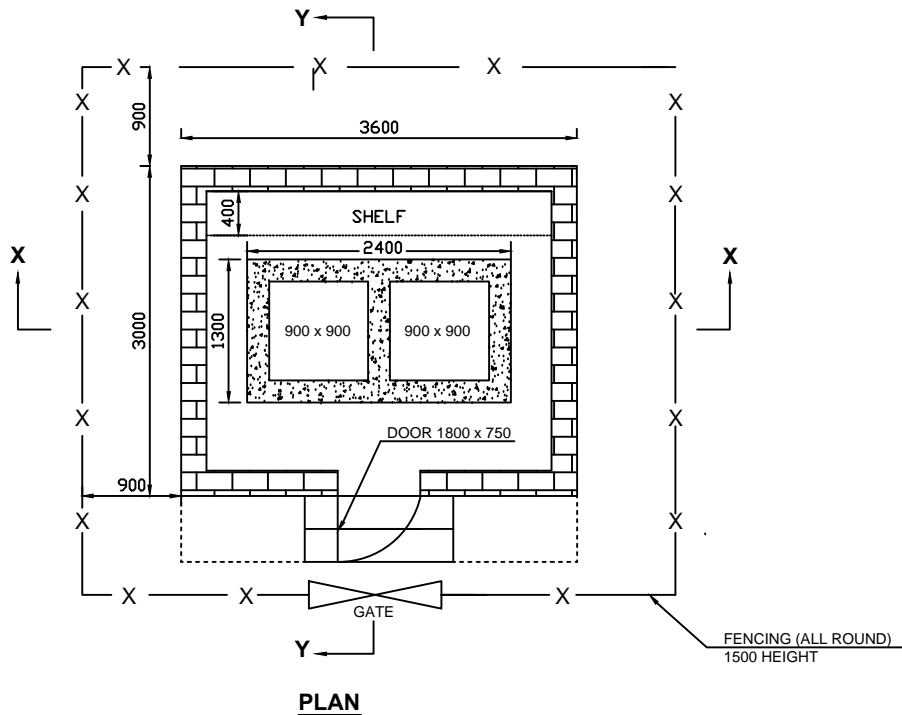
BRICKS



CONCRETE  
1 : 2 : 4

**NOTES: -**

1. ALL DIMENSIONS ARE IN MM.
2. ROUGH PLASTERING FOR INTERNAL & OUTER WALLS.
3. PLASTERING IN CEMENT MOTOR 1 : 4, 15MM THK. ON OUTSIDE WALLS.
4. WATER PROOF MATERIALS TO BE USED FOR PLASTERING SOURCE PIT.
5. WHITE WASHING



**COCHIN SHIPYARD LIMITED**

COCHIN - 682 015

AGM(CE)		<b>RADIOGRAPHY CAMERA STORAGE ROOM</b> <b>PLAN AND SECTION</b>
AM (CE)		
DRAWN	DHANYA.A.G.	
DATE : 28-05-2010		SCALE : NTS